

# COGO+LT Installation Instructions

By Jacob Wall

---

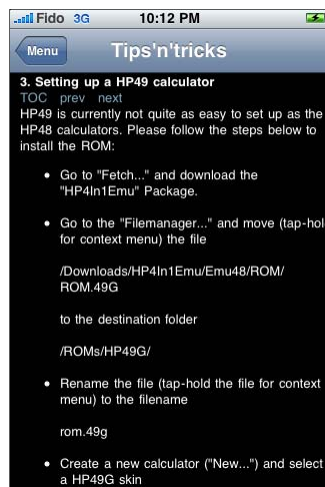
## m48+ for iPhone

### *What you need:*

- iPhone (or iPod Touch)
- m48+ App available at the App Store
- PC or Mac with WiFi internet connection

### *Steps to install:*

1. Follow instructions found under 'Tips'n'tricks' within the m48+ App for "Setting up a HP49 calculator":



2. Download the COGO+LT library file (CPLT.LIB) from <http://surv50.ca/downloads.html> and save the file:

### **COGO+LT Library file (LIB)**

The Version 2.1 program library file for COGO+LT.

# COGO+LT Installation Instructions

By Jacob Wall

---

3. Under 'Settings' within the m48+ App "Enable on WLAN" for the Import/Export Server:



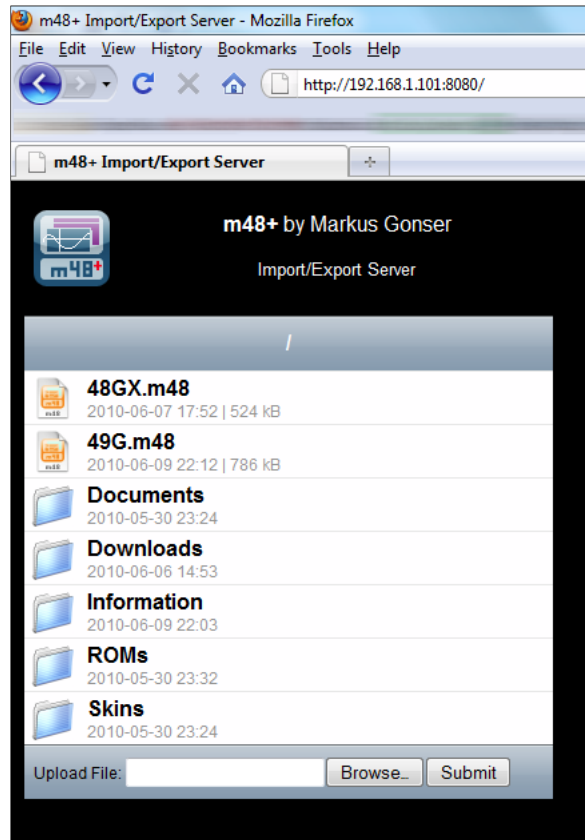
4. Now the Server IP address appears at the bottom of the screen when you return to "Menu":



# COGO+LT Installation Instructions

By Jacob Wall

5. Enter the IP address into your browser to start the Import/Export:



6. Open the folder you wish to save the file to, for example a 'Downloads' directory, then "Browse.." for the CPLT.LIB file and select "Submit".
7. On the iPhone select 'Load Object' from the Menu and find the CPLT.LIB file:



# COGO+LT Installation Instructions

By Jacob Wall

---

- Return back to the calculator to find Library 930: COGO+LT 2.1 on stack level one.
- Enter  $\text{0 STO}$  to store the library in Port o (IMPORTANT to store to Port o)



- Warmstart the emulated calculator by holding ON and tapping F3, release both.

Please refer to the COGO+50 Reference Manual for program specific information.

# COGO+LT Installation Instructions

By Jacob Wall

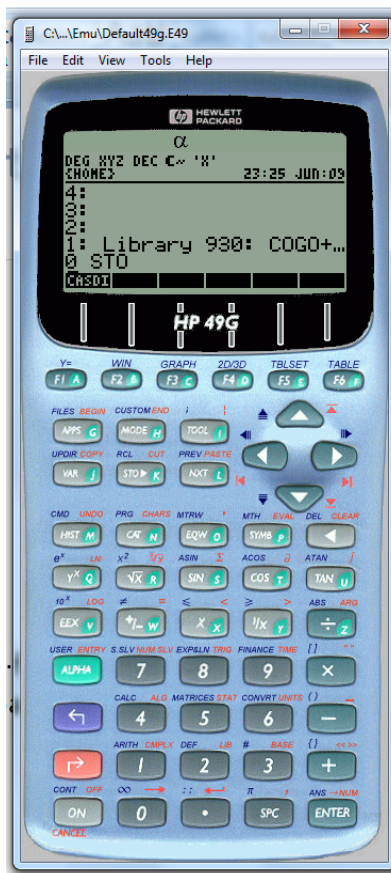
## Emu48 for Windows

### What you need:

- Emu48 installed on PC
- COGO+LT library file CPLT.LIB

### Steps to install:

1. Open Emu48 and load a 49g \*.e49 Emu48 file.
2. From the 'Edit' drop down menu select "Load Object".
3. Locate the CPLT.LIB file and "Open".
4. With Library 930: COGO+LT 2.1 on stack level one enter 0 STO to install.
5. Warmstart the emulated calculator by clicking ON and press the "C" key, release both.



Please refer to the COGO+50 Reference Manual for program specific information.